



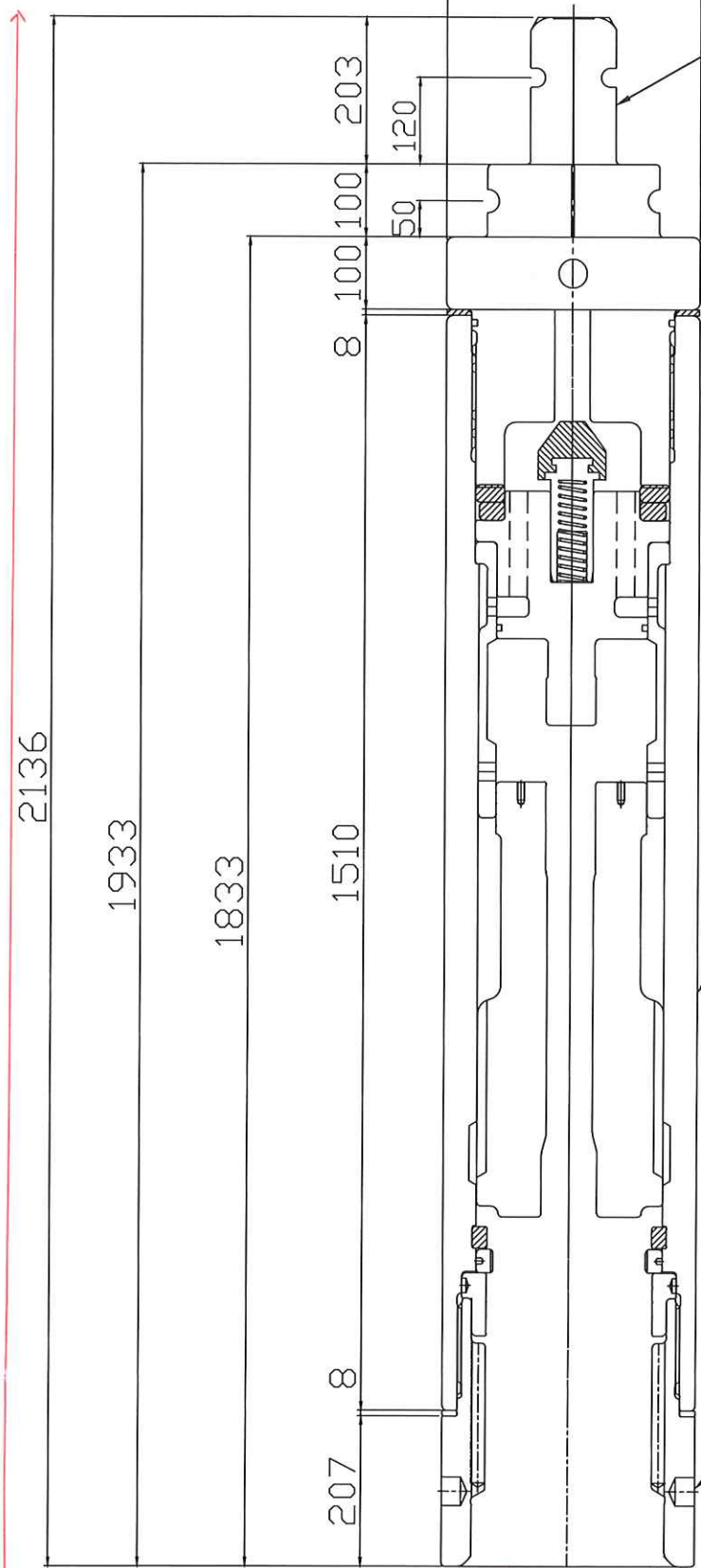
Medium size hammers

HAMMER SIZE	BIT SHANK(mm)	RECOMMENDED BIT SIZE O/D(mm)	Outside Dia.(mm)	Length (mm)	Weight (kg)	UN-BALANCED BIT SIZE	CONNECTION
SJ270	AD270						
	12" DD10D 185.5	380 ~ 475	270	1,783	630	445,460,508,558, etc	API6 5/8 REG PIN HEX JOINT
	A100-15 DHD112 183						
SJ320	14" NV45 200	380 ~ 530	320	1,828	910	510,525,550, etc	API6 5/8 REG PIN API7 5/8 REG PIN HEX JOINT
	NV55 226						
SJ350	15" K350 252.5	445 ~ 630	350	1,885	1,100	558,575, etc	API7 5/8 REG PIN HEX JOINT
SJ370	SD15 268.7						
	16" DD14C 271.5	457 ~ 650	370	1,859	1,240	610,630,660, etc	API8 5/8 REG PIN HEX JOINT
	K370 271.5						
SJ402	SD18 312.5						
	18" N180 296.7	525 ~ 750	410	1,952	1,480	711, etc	API8 5/8 REG PIN HEX JOINT
	DD16A 320.5						
	AD450 329.4						

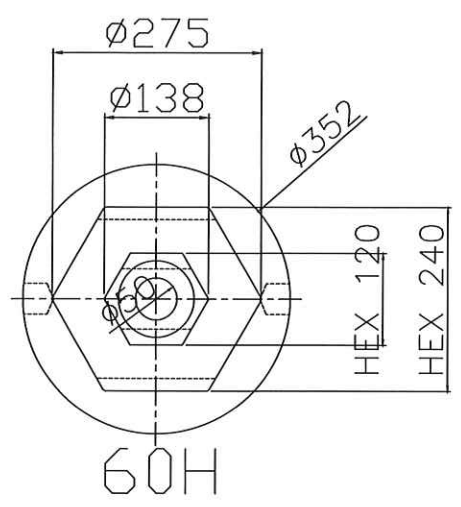
Model	Air Consumption		
	150PSI (10.5kg/cm ²)	200PSI (14kg/cm ²)	250PSI (17kg/cm ²)
SJ270	860CFM (24.4m ³ /min)	1,100CFM (31.1m ³ /min)	1,700CFM (48.1m ³ /min)
SJ320	1,150CFM (32.6m ³ /min)	1,650CFM (46.7m ³ /min)	2,150CFM (60.9m ³ /min)
SJ370	1,350CFM (38.2m ³ /min)	1,930CFM (54.7m ³ /min)	2,720CFM (77.0m ³ /min)
SJ402	1,430CFM (40.5m ³ /min)	2,120CFM (60.0m ³ /min)	3000CFM (85.0m ³ /min)
SJ470	1,650CFM (46.7m ³ /min)	2,440CFM (69.1m ³ /min)	3,450CFM (97.7m ³ /min)



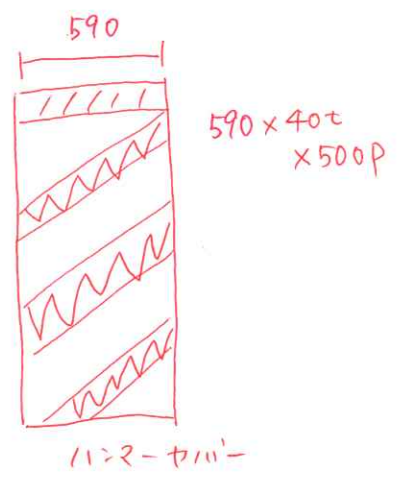
全長 2,126.6



60H Adapter



HT350 Hammer



SD15 Drive Sub

ハンマー重量: 約 400kg
 ハンマー重量: 約 1,070kg
 ビット重量: 約 550kg

설계	검토	승인	날짜	항아명	HT350+60H
			2019. 12. 18	부품명	ASSEMBLY

